

BL&T

FINE JEWELLERY

Expertise you can rely on



A platinum and diamond
line bracelet, circa 1950

BL&T Fine Jewellery Ltd Rembrandt House 5 Vigo Street London W1S 3HB
Savannah Britten-Long / Graeme Thompson t. 07584 672 002/07584 672 001
e. info@bltfinejewellery.com www.bltfinejewellery.com



Buying antique and period jewellery, or a diamond for an engagement ring, is intimidating when you do not know exactly what you are looking for – or what makes a fair price.

To guide clients through the world of jewellery and precious stones, Savannah Britten-Long and Graeme Thompson, both qualified gemmologists with extensive experience and knowledge, founded BL&T Fine Jewellery Ltd.

BL&T are committed to fulfilling the requests of our clients by dedicating time and understanding to each person's aspirations.

Jewellery

The following pieces have been carefully selected for our clients using expertise, skill and most importantly, eye for beauty.

BL&T are a combination of knowledge and experience creating a professional and personal service – guaranteeing a cost effective way to buy jewellery.

An art deco sapphire and diamond ring, circa 1925



A sapphire and diamond bracelet, circa 1950

A French ruby and diamond bracelet, circa 1960



A pair of ruby and diamond 'Leaf' brooches, by Van Cleef and Arpels, circa 1960

A Belle Epoque peridot brooch, by Cartier





An Edwardian diamond
garland pendant on a seed
pearl necklace, by Cartier,
circa 1900



A pair of sapphire and diamond pendent earrings



A sapphire, diamond and emerald brooch, by Yard



A carved sapphire and diamond dress ring, by Marchak, circa 1960



A pair of sapphire cufflinks and a single stud, by Cartier, circa 1920



A pair of onyx and pearl
pendent earrings,
circa 1920



An art deco platinum and
diamond bracelet, by
Boivin, 1937



A pair of old brilliant-cut
diamond earstuds

A late 19th century diamond
and pearl brooch, by Black
Star and Frost,
circa 1890



We offer a cost effective approach to buying jewellery

Engagement Rings

To remove the stress, uncertainty and time it takes to find your perfect engagement ring, diamond or coloured stone, BL&T can provide a bespoke service.

We are unique in aiding clients to be a part of creating something they didn't think they could either afford or were capable of creating.



A cushion-cut diamond weighing 2.21 carats

Accompanied by a GIA certificate stating the diamond is F colour and VS2 clarity



A bespoke diamond engagement ring set with a marquise-cut diamond



A bespoke sapphire and diamond ring



A bespoke diamond engagement ring set with a cushion-cut diamond weighing 1.34 carats, F colour and VS2 clarity.



A bespoke diamond three-stone ring, set with three brilliant-cut diamonds



A platinum baguette-cut diamond eternity ring



A bespoke diamond ring, set with a step-cut diamond, weighing 1.59 carats, G colour and VS1 clarity



An art deco diamond dress ring,
by Mauboussin, circa 1940

We are here to advise you in a professional and attentive manner, tailoring your specific requirements



An Edwardian pearl, onyx and diamond bracelet, circa 1900



An art deco diamond plaque ring,
circa 1930



A gold blister pearl and diamond ring, by Grima, circa 1970



A citrine dress ring, by Seamen Sheppes, circa 1980



A sapphire and diamond 'ribbon' ring, circa 1950



A ruby and diamond 'roof' ring, circa 1950



A gold ring, Cartier



A late 19th century ruby and diamond five-stone ring, circa 1880



A French sapphire and diamond 'fan' ring, circa 1960



A French emerald and diamond dress ring, by Rubel, circa 1940



A cabochon sapphire and diamond ring,

We offer expert advice founded on knowledge and experience

Valuations for Sale

If you are considering selling your jewellery, or diamonds, it is vital to obtain confidential and impartial advice.

BL&T Fine Jewellery offers a specialist service advising you on all aspects of achieving the maximum market price for each and every item, without obligation.



A 19th century red spinel and diamond ring, circa 1890

A 19th century moonstone, diamond and ruby bracelet, by Mellerio, circa 1880



A pair of French gold and diamond earrings, circa 1960



A coral turtle brooch, by Chaumet



An art deco gold and citrine brooch, French, circa 1940



A gold ruby and diamond ring, by Oscar Hyman



A gold bracelet, by Hammermann Brothers, circa 1960



A pair of shell cufflinks, by Marchak, circa 1965



A gold and diamond brooch, by Bulgari, circa 1960



A pair of 19th century gold cufflinks, London 1860



A coral dress ring



A diamond, pink tourmaline and pearl pendant, circa 1900



A pair of late 19th century amethyst and diamond earrings, circa 1890



An art deco carved ruby and diamond bracelet, circa 1940



A French gold 'tank' bracelet, circa 1940



An art deco diamond two-stone ring, circa 1925



A pair of ruby and diamond double-clip brooches, circa 1900



A French sapphire and diamond 'ribbon' brooch, circa 1935



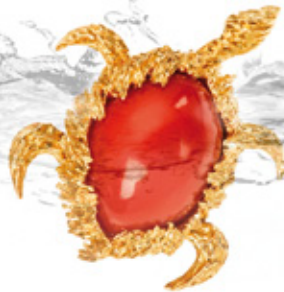
A lapis lazuli, ruby and sapphire turtle brooch, by Cartier, circa 1965



A ruby and diamond bracelet, by Cartier, circa 1920



We are a personal service built on trust





A pair of diamond flower earrings,
by Van Cleef and Arpels,
circa 1950

BL&T

FINE JEWELLERY

BL&T Fine Jewellery Ltd Rembrandt House 5 Vigo Street London W1S 3HB
Savannah Britten-Long/ Graeme Thompson t. 07584 672 002/07584 672 001
e. info@bltfinejewellery.com www.bltfinejewellery.com